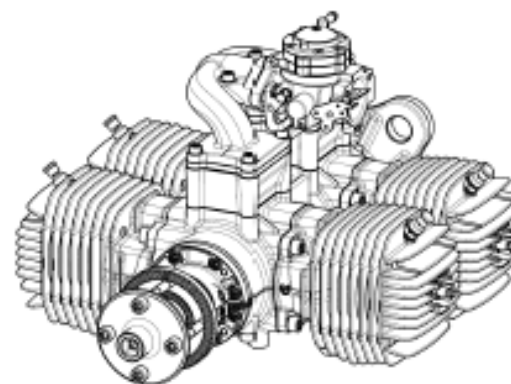
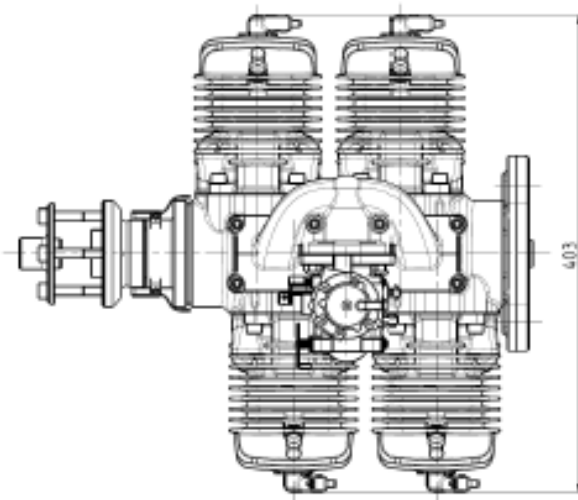
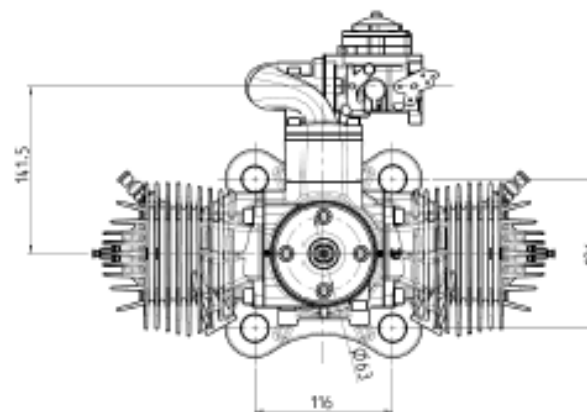
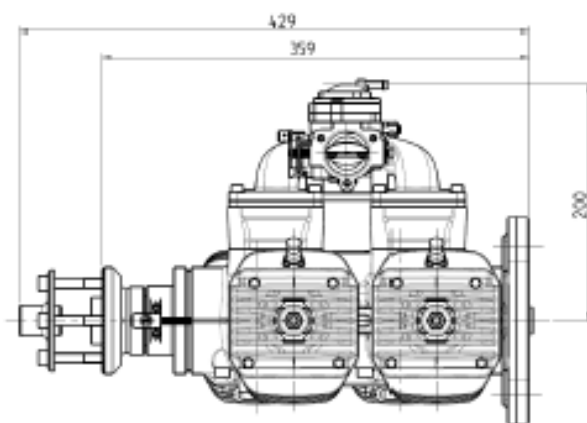


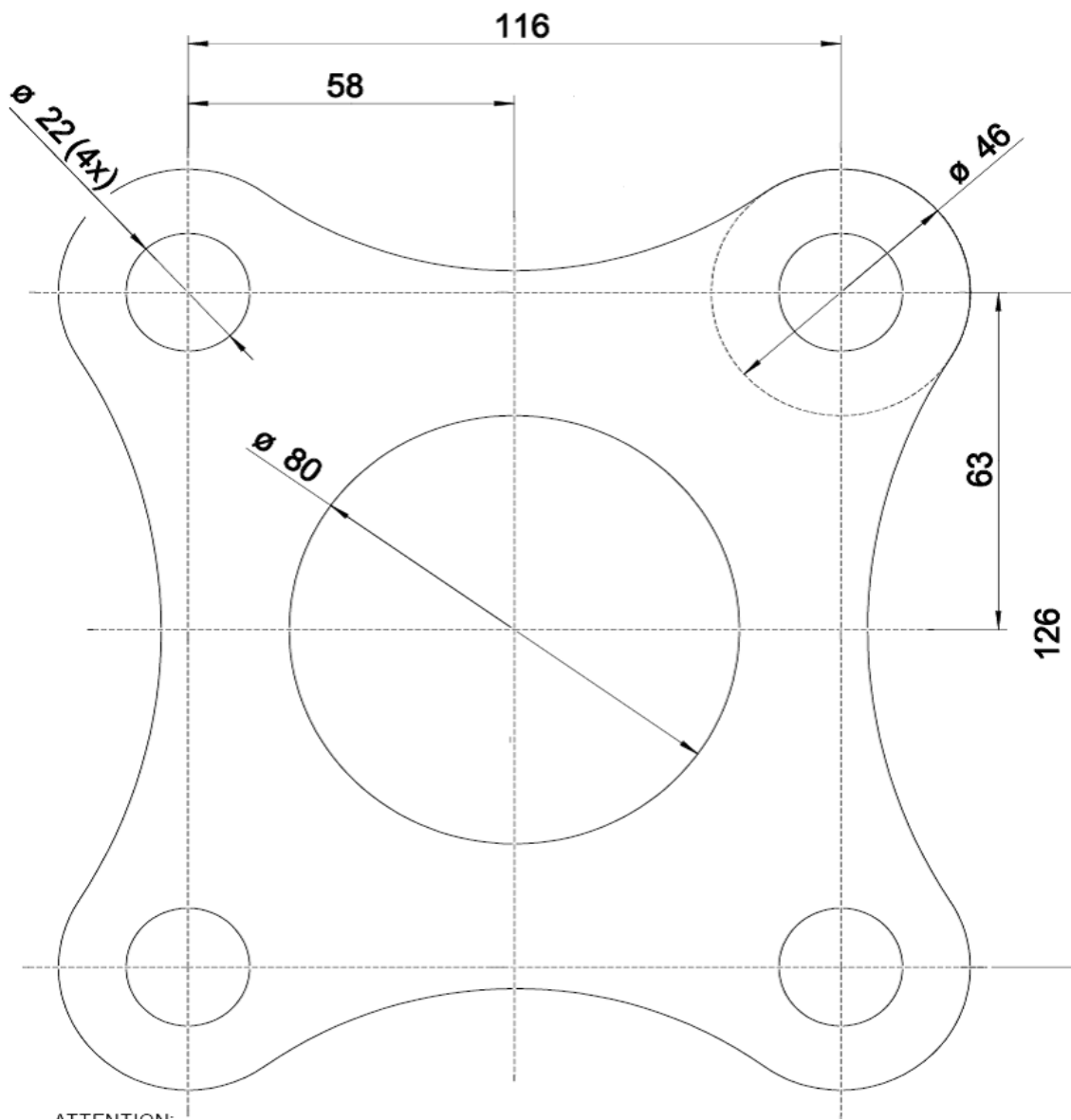


Anlage A
3W-684iB4

1. Dreiseitenansicht



2. Bohrschablone





3. Technische Daten

| | 3W-684iB4 |
|-----------------------|--|
| Hubraum | 684,0 ccm |
| Leistung | 60,0 PS (44,1 KW) |
| Bohrung | 66,00 mm |
| Hub | 50,00 mm |
| Drehzahlbereich | 1.200 – 6.500 U / min |
| Gewicht inkl. Zündung | 16.000 g |
| Kurbelwelle | 3 Kugellager |
| Pleuel | Nadellager an beiden Enden |
| Benzingemisch | 1 : 50 – 1: 80 (min. 92 Oktan) |
| IIS – Zündung | 6,0 – 8,4 V, 5 Zellen oder 2 Zellen LiPo |
| 2-Blatt Propeller | 40 x 18 CFK Bestellnummer 10.101.698 43 x 16 CFK Bestellnummer 10.101.699 |