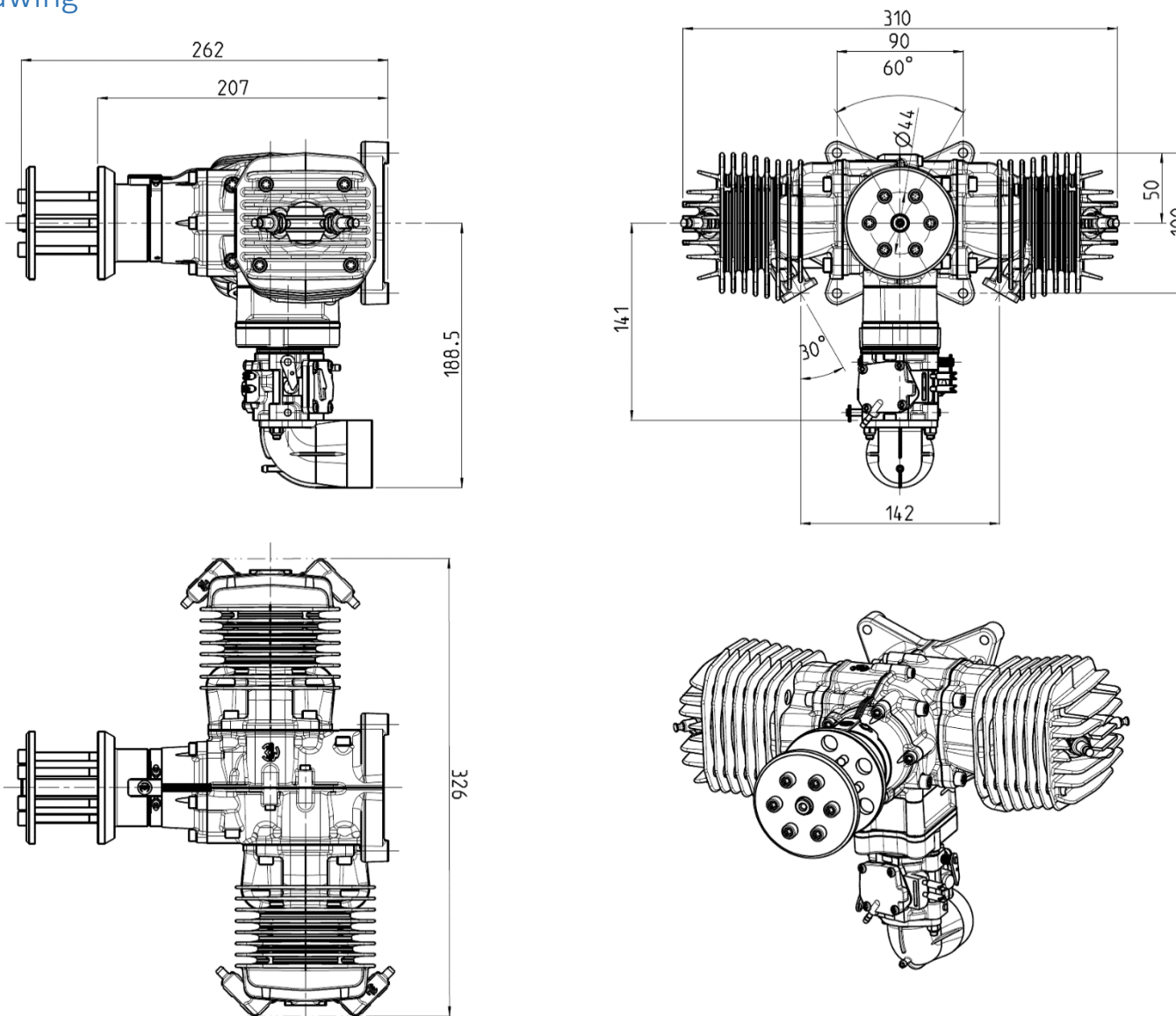


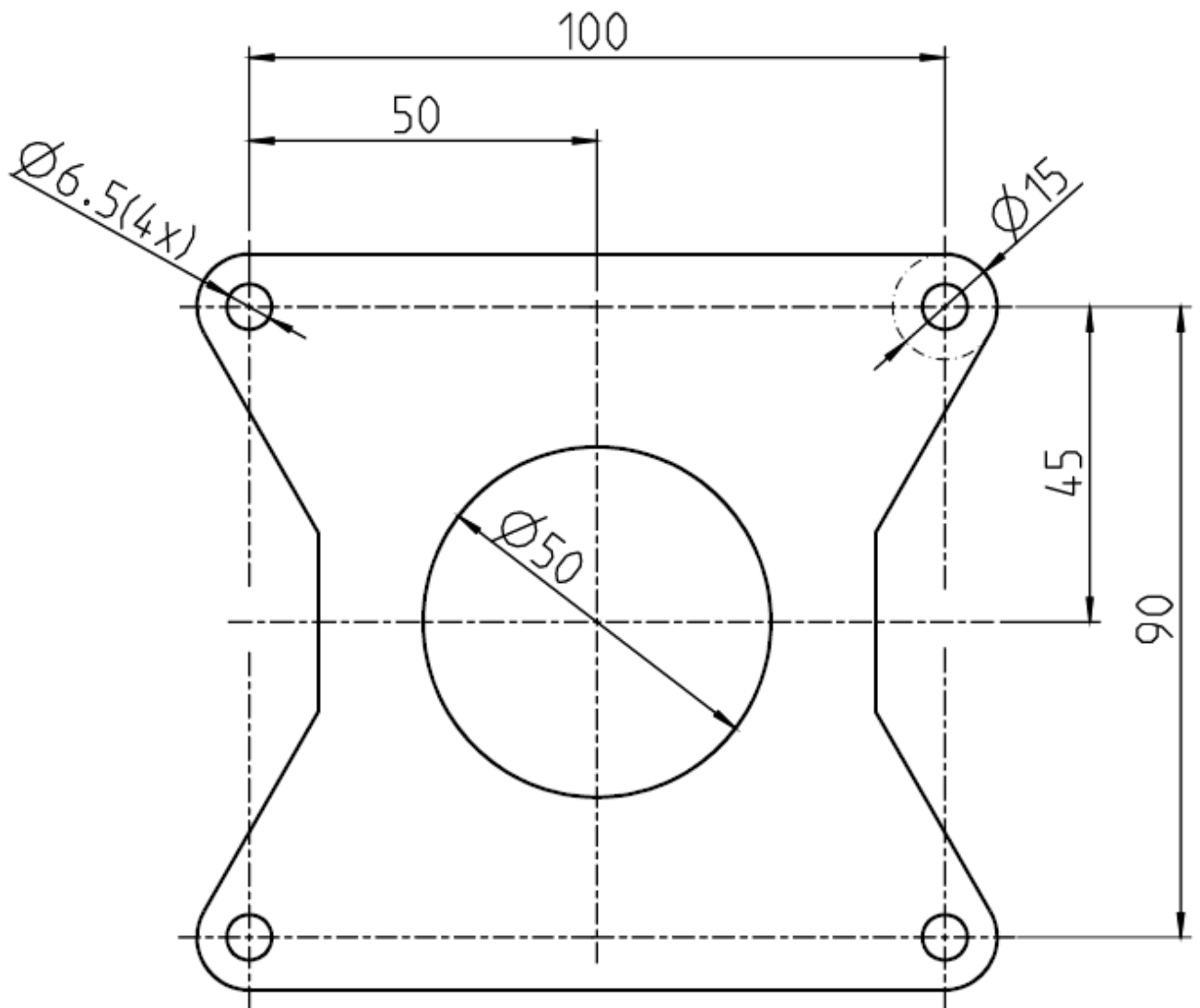


Annex A
3W-210XiB2 TS CS

1. 3-view drawing



2. Drilling template





3. Specifications

	3W-210XiB2 TS CS
Cylinder capacity	210.5 ccm
Power	21.0 HP (15.4 KW)
Bore diameter	55.00 mm
Stroke	44.00 mm
Speed range	1,000 – 7,500 rpm
Weight, incl. ignition	5,000 g
Crankshaft	3 ball bearing
Rods	Needle bearings at both ends
Oil / gasoline ratio	1 : 50 – 1: 80 (min. 92 Octan)
IIS – ignition	6.0 – 8.4 V, 5 cells or 2 cells LiPo
2-blade propeller	34 x 10 wood part number 10.101.609 34 x 12 wood part number 10.101.613 32 x 14 CFK part number 10.101.690 31,75 x 14 x 8 CFK part number 10.101.685 (3D)
3-blade propeller	29 x 10 CFK part number 10.101.750 31,75 x 14 x 8 CFK part number 10.101.760 (3D)